



# Lake Lines

News From The Lake Sovereign Neighborhood

Cherokee County's Premier Private Lake Community

Newsletter Date

Jul - Aug 2008

## IMPORTANT NOTICE!!!

This will be the **last** home-delivered Lake Lines

Future Lake Lines will be sent via E-mail

Send your e-mail address to [communications@lakesovereign.net](mailto:communications@lakesovereign.net) for future issues. Previous issues of Lake Lines can be found on our website.

In an effort to reduce printing cost and increase the ease of delivery, all future Lake Lines will be sent via E-mail. A small quantity of printed Lake Lines will be placed in a box at the entrance of the club house for those residents who do not have computer e-mail capabilities.

Personal phone numbers and e-mail addresses will no longer be listed in Lake Lines. Board Members and Committee Chairmen can be contacted using the 'Contact' link on our webpage at [www.lakesovereign.net](http://www.lakesovereign.net) or by using your Community Phone Directory. A Community Phone Directory can be requested from [communications@lakesovereign.net](mailto:communications@lakesovereign.net).



## Have You Had Your Roof Inspected?

The hail storm earlier this year damaged many of the roofs in the neighborhood. Some of our residents, who thought they had little or no damage, need to have their complete roof replaced. If you have not had your roof inspected, you may want to contact your insurance company and arrange for an inspection.



### Inside this issue:

<i>Disaster Prep</i>	<b>2</b>
<i>Recreation</i>	<b>3</b>
<i>Architectural</i>	<b>5</b>
<i>Lake</i>	<b>8</b>
<i>Common Grounds</i>	<b>11</b>
<i>Social</i>	<b>13</b>
<i>Miscellaneous</i>	<b>15</b>
<i>Advertisements</i>	<b>16</b>
<i>Board Meeting</i>	<b>18</b>



### LSHOA

330 Lake Sovereign Court  
Canton, Georgia 30114  
[www.lakesovereign.net](http://www.lakesovereign.net)



## Disaster Preparedness - How to Assemble a Disaster Supply Kit

### Prepare for Any Type of Emergency Conditions

Nearly every community in the US is subject to some kind of natural disaster: tornadoes, hurricanes, floods, mudslides, heavy snowstorms, earthquakes... the list goes on and on. And there is also the threat of a terrorist attack that could come in many different forms. Depending upon the scope of the disaster, emergency workers may not be able to reach you for several days. So it makes sense to prepare our homes for a variety of disasters.

FEMA and the Red Cross offer suggestions to help us prepare for a disaster. The majority of the plans include things we should all consider doing for any type of disaster. And that is to gather and have available: **Disaster Supply Kits.**

Gather water, food and emergency supplies to last at least three days --longer is better. You probably already have most of the items on the list below. The trick is gathering them in one area and packing them so that items are easy to transport.

Rubbermaid and other similar manufacturers make plastic, sealable containers in many sizes and shapes, some with carrying handles that make them easy to transport. Clean trash containers with tight-fitting lids are another choice. Find a variety of container sizes that you can pack into your car in a short time if necessary.

### Supply of Drinking Water

- A minimum of one gallon of water per person per day.
- Buy bottled water or store tap water in washed plastic, fiberglass or enamel-lined metal containers. Sanitize containers with a solution of one part bleach to ten parts water before using.
- If your tap water is commercially treated, you can use it as-is. For well water or untreated public water, follow treatment instructions provided by your public health service.
- Seal the water containers tightly and label them with the date. Store in a cool, dark place. Refresh your water supply every six months.
- If you're on a private well in an area prone to electrical outages, you might want to store larger amounts of water to flush stools and for general cleanup. The bakery departments of grocery stores receive pre-made frosting in covered buckets and will often give you those buckets free. Cat litter and other products come in suitable 2-3 gallon covered buckets. Look around to see what you can find.

### Choosing Food Supplies

Use a permanent marker to date foods and replace items every six months. Pack foods in watertight bags or sturdy plastic containers.

- Canned foods are a good choice. Buy ready-to-eat meats, fruits, and vegetables.
- Buy canned or boxed juices, milk, soup, and powdered milk.
- Peanut butter is a good source of protein.
- Crackers, granola bars, cereals, trail mix.
- Instant coffee and tea.
- Sugar, salt, pepper, other spices.
- Don't forget a manual can opener!

### **Your First Aid Supplies**

- First aid manual, scissors, sterile bandages, gauze pads, cotton balls, safety pins, latex gloves.
- Antibiotic ointment, cleansing agents such as isopropyl alcohol and hydrogen peroxide, germicidal soaps, moistened towelettes.
- Needles, tweezers, scissors, thermometer.
- Aspirin, anti-diarrhea medication, antacids, syrup of ipecac (to induce vomiting), vitamins.
- Ask your doctor or pharmacist for advice if you wish to store your regular prescription medications.

### **Essential Tools and Emergency Supplies**

- Battery-powered radio or television and extra batteries, a NOAA weather radio.
- Flashlight and extra batteries
- Matches in a waterproof container.
- Shutoff wrench, pliers, shovel and other tools.
- Duct tape, scissors, plastic sheeting.
- Fire extinguisher.
- Paper, pens, pencils.
- Needles and thread.
- Paper plates, plastic cups and utensils. Plastic trash bags.
- Hand sanitizer, liquid detergent, towelettes, soap. Toilet paper, paper towels.
- Chlorine bleach and other disinfectant cleaners.
- Household documents, contact numbers.
- Copies of important documents. Cash or traveler's checks.

### **Other Items**

- Blankets, bedding, sleeping bags.
- Comfortable clothes and shoes.
- Supplies for babies and the elderly.
- Supplies for your pets.
- Things to do: books, games, toys.

### **At Work and In Your Car**

- Keep an emergency backpack at the office in case you can't get home right away.
- Store a supply of food and water in your car. Include jumper cables, flares, ice melt and other seasonal items.
- Keep your gas tank filled.

While these items cover the basics; FEMA, the American Red Cross and other government agencies can offer you much more advice to help you prepare for any type of disaster.

## Lake Sovereign Swimming Pool Operating Rules for 2008

The pool rules are in effect for the benefit of all members. It is our right and privilege to enforce these rules as stated below. If at anytime you witness illegal activity at our pool, please call the police (911).

Pool Opens 10 May 08 and Closes 21 Sep 08

**Pool Hours of Operation are 8am to 10pm**

- ◆ All persons using the pool do so at their own risk. Owners and the Association are not responsible for accidents or injuries.
- ◆ The pool is for private use only. An adult resident (greater than 18 years of age) must accompany all guests. Children under the age of 14 must be accompanied by an adult.
- ◆ The HOA reserves the right to suspend/revoke pool rights to those who choose to violate the rules.
- ◆ Members who are not in good standing with the Association are denied use of the common areas. Good standing status is applied to all owners who are current with all financial obligations to the Association.
- ◆ NO glass containers of any kind are permitted in the pool area.
- ◆ NO running, rough play, or boisterous or obscene behavior are permitted in and around the pool area.
- ◆ Residents and/or guests under the influence of alcohol or drugs are not permitted in or around the pool area.
- ◆ Any person with infectious/communicable disease is not permitted to use the pool.
- ◆ NO diving.
- ◆ Proper swim attire must be on at all times; swim diapers must be on all children that are not completely potty trained.
- ◆ NO animals (except assistance) are allowed in or around the pool area.
- ◆ Please shower before entering pool.
- ◆ No smoking in the pool or area inside the pool fence.
- ◆ Emergency Dial 911

For the protection of members, please note that the pool and parking area are under video surveillance twenty-four hours each day. LSHOA will from time to time employ the services of off duty law enforcement to monitor the pool, clubhouse, parking as well as the neighborhood after dark. Swimming Pool should not be used after closing at 10:00 pm. Pool users after 10:00 pm are subject to appropriate law enforcement action.



## *Architectural Review Committee*

**Introduction** - The basic purpose of this committee is to preserve the aesthetic value and appearance of the structures and landscaping of the Lake Sovereign community. Its goal is to maintain the neighborhood to the highest standards applicable. The governing guidelines can be found in the Lake Sovereign Governing Documents section on our website at -

[http://www.lakesovereign.net/governing\\_docs.asp](http://www.lakesovereign.net/governing_docs.asp)

The committee considers and approves or disapproves plans and specifications for private pools, fences, walls, home modifications/additions, sheds, removal of trees and shrubs, and other items affecting the value and/or appearance of the neighborhood. The committee partners with the Lake Committee on property additions affecting lake shorelines and the twenty-five foot statutory buffer zone.

BEFORE you begin construction, removal, etc..., please submit an ARC Submission Form with supporting documents to this committee. It is very important that you include all necessary documents in order to receive an expeditious response. If you are in any doubt as to how to proceed or whether you need to proceed, please contact a committee member. The committee is committed to assisting you in any way it can. The committee is here to protect our largest investment - our homes and property.

If you believe there is a violation of the Covenants, please submit an ARC Violations Form to the committee for consideration and action. The form is available on line at [www.lakesovereign.net](http://www.lakesovereign.net) and submissions are kept confidential to preserve the anonymity of the submitting owner.

**Committee Charter** - Architectural Review Committee (ARC)—The ARC is the only committee specifically defined in the HOA Declaration (see Section 5.03). The objective of this committee is to recommend and maintain the approved construction, aesthetic and environmental standards of the neighborhood for new and existing properties. Duties include keeping a record of new properties scheduled for closing, pending foreclosures and coordinating closely with the Finance Committee and the Treasurer.

**Committee Email Address** - You may contact the committee members by sending an email to [architectural@lakesovereign.net](mailto:architectural@lakesovereign.net)

**Committee Membership** - Open to all residents. Please let us know if you are interested in joining the committee!

**Meetings** - The Architectural Control Committee meets on the 1<sup>st</sup> Wednesday of every month at 6:00 pm at the Lake Sovereign Clubhouse.

**Procedure** – The Lake Sovereign Homeowners Association Violation Enforcement Policy was recently mailed to all Lake Sovereign residents in a communication package. A copy is also available on our web site.



## *Architectural Review Committee*

### Top Ten Violations

The following are the most commonly violated covenants of the Lake Sovereign Homeowners Association. A copy of the covenants is available on our web site at: [http://www.lakesovereign.net/governing\\_docs.asp](http://www.lakesovereign.net/governing_docs.asp)

1. Yard Maintenance - Unsightly or Unkempt Conditions
2. Mailbox and Mailbox Post
3. Vacant Lot Violations – lot not mowed fifteen feet from curb, ragged silt fences, dead trees, debris
4. New Construction Violations
5. Trailers, boats, RV's
6. Parking on streets overnight, owner commercial logo vehicles parked in driveways
7. Signs—primarily real estate signage not within ARC Standards
8. Exterior paint color changes or construction without ARC approval
9. Basketball Goals
0. Garbage Cans, Woodpiles viewed from a main thoroughfare, etc

---

**Please do not ignore an enforcement letter. We are all legally bound by our Governing Documents and the HOA will aggressively enforce the covenants. If you get a violation letter please take action to remedy or ask for a hearing at the next HOA Board Meeting.**



# Lake Committee Report

It has been a busy time for the Lake Committee! This committee was established to manage the environment of our lake. Our ultimate goal is to provide a safe, fun family environment for our residents. We have made many improvements to this asset. The committee has installed/updated the security lighting around the lake, boat ramp and clubhouse dock. You may have noticed the new style benches located around the lake. These benches are lower maintenance and will provide years of enjoyment for all our residents. Garbage cans have been installed in various locations around the lake. We also worked closely with our Lake Silt Restitution Committee during the dredging process and have begun the process of restoration to our lake bed.

The fountain has been turned back on thanks to the recent changes in the drought restrictions. Our original aerator finally stopped working. A new aerator has been installed with a larger HP motor which will allow for larger amounts of oxygen, at deeper levels, into the water column.

All docks, bridges and the walkway to the clubhouse have been updated with Trex. The result is decking that will require only periodic cleaning to stay beautiful for years to come – no need for sanding, staining or painting, ever. Other Trex advantages: It will not rot or deteriorate due to harsh weather or insects. Trex is splinter-free and has excellent traction, even when wet. It contains no toxic chemicals or preservatives. Trex resists damage from moisture and sunlight as well.

We have begun the process of creating a better “natural” environment for our fish population. Porcupine fish attractors, fish habitat boxes and two solar powered fish feeders have been installed. The feeders will be managed by our lake management company. Both feeders automatically feed twice a day. The feeders have been installed at docks 1 & 2. Additional information regarding these environmental improvements will follow this letter. Mapping of our lake, showing all new structures installed, is being prepared. We will post a copy of this map at the clubhouse when it becomes available.

With the warmer weather more residents are enjoying our lake. Please be mindful of the rules and regulations regarding use of our lake. The rules and regulations can be found at [www.lakesovereign.net](http://www.lakesovereign.net). If you need a flag for your boat please contact me at [lake@lakesovereign.net](mailto:lake@lakesovereign.net) to make arrangements to receive your flag.

As always, the lake committee is interested in hearing from you. If you have any suggestions or comments regarding the lake contact me at [lake@lakesovereign.net](mailto:lake@lakesovereign.net). If you have any pictures you would like to share of your activities on the lake or fish you have caught in our lake, email the pictures to [lake@lakesovereign.net](mailto:lake@lakesovereign.net).

Hope to see you at the lake,

*David Perry*

Lake Committee Chairman

# Lake Committee Report

## Porcupine Fish Attractors:

Attract Fish

Won't Hang Your Lures

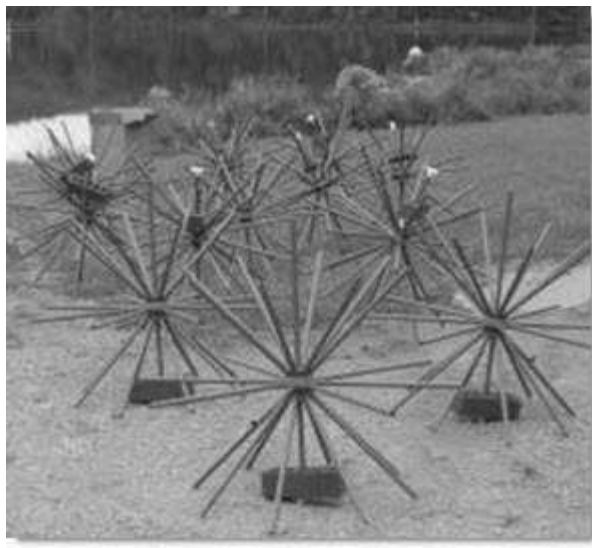
Improve Spawning Habitat

Work Fast

Recommended by Professional Anglers

Designed for Both Large/Small Lakes

Affordably Priced



**WHAT IS THE PORCUPINE FISH ATTRACTOR?...**It's an artificial fishing structure that brings fish and fishermen closer together. A plastic sphere allows 26 separate ½-inch plastic pipes to stick out, giving the attractor 5 1/2 feet of cover for fish to hide around, spawn, etc... You can fish it without snagging and losing lures such as jigs, crank baits, etc...

**DOES IT REALLY WORK?...**The fish (and fishermen) say there's no doubt it attracts fish in a short time. And, in addition to providing spawning habitat it gives refuge to the first young fish of the year, increasing survival rates for future fishing success.

**HOW DO I INSTALL IT?...**Quick and easy assembly can be done in 5-minutes. We recommend using PVC glue to help secure the pipes to the sphere. It sinks on its own in seconds. Light enough to toss out of a boat, pontoon or from piers or shore. Even a small kid can do it.

**DOES IT NEED TO BE ANCHORED?...**Not if you use them in farm ponds or small lakes as its design prevents tumbling or movement. There is a small hole in the sphere to secure anchor, concrete block, etc...We recommend using aluminum or copper wire (doesn't rust) and adding anchor to the attractor if you plan to place them in big reservoirs or rivers where current or high winds might be a factor.

**WHERE'S THE BEST PLACE TO SINK THEM?...**A variety of depths will increase productivity yet in small ponds the structures will enhance the fishery wherever you place them. Still, if you have two depth extremes close together it's good to place attractors at both depth zones or along the drop-off and let the fish decide which spot best provides them a comfort zone.

**WHEN IS THE BEST TIME TO PUT THEM OUT?...**Anytime is good. Fish relate to them quickly. Watch for action to improve even more once algae and plankton form, attracting baitfish and luring larger fish to their locale.

**DO THEY SHOW UP ON DEPTH FINDER/LCR UNIT?...**Yes. In deeper water and on large lakes it's a good idea to place more than one unit in a spot, as this will give you a better reading.

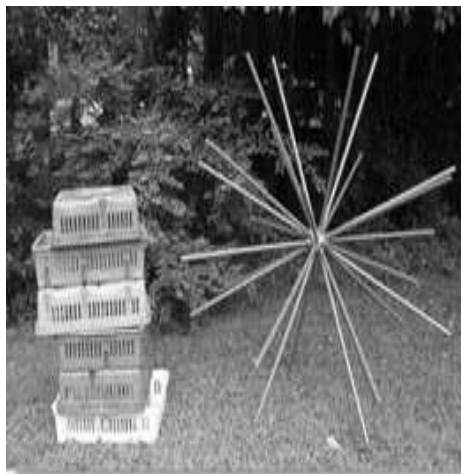
**HOW DO I LOCATE THEM AFTER PLACEMENT?...**Placing the structures around piers or boathouses makes it easy to return but for open water venues such as submerged creek channels for bass, crappie, walleye, catfish, etc...we recommend using GPS coordinates or triangulation of landmarks to pinpoint the location.

**DO THEY LAST LONG?...**These attractors will last indefinitely and offer anglers much longer use than brush piles, etc...

**WHAT SPECIES DOES IT ATTRACT?...**A wide variety of species relate to the structures but topping the list is crappie, bass, catfish, walleye, and yellow perch.

## Lake Committee Report

**Fish Feeder**—The supplemental feeding of fish in a recreational pond or lake can enhance the size of perch, bream, sunfish and other forage fish that the trophy bass are after. Although bass will not readily consume the supplemental feed, they will benefit from the production of larger, healthier forage fish. “By utilizing an automatic fish feeder, customers add a consistent daily addition to the food chain..and that leads to bigger, healthier trophy bass. A regular feed regimen can also improve catch rates by concentrating fish in feeding ‘zones’ at precise times” adds Brock. Utilizing a high velocity air stream, the feeder projects feed pellets up to 45 feet into the water with a broad 20 ft. wedge shaped pattern.



**Fish Habitat Boxes**—Fish Habitat boxes are an excellent solution for creating artificial reefs and cover for young fish. Rocks and Christmas trees are a common solution for creating dense cover but rocks are cumbersome to place and a tree only last a couple of fishing seasons.

How does this help with the fishery? It was explained to me by a well known fisheries biologist; A bass has to eat 10lbs of fish in order to gain one pound. Small 1 inch bluegill generally weigh 5lbs per 1,000 fish thus the bass would have to eat 2,000 bluegill to gain one pound. This is a simplified example but should show you how protecting the small bluegill and minnows is essential for good bass growth.

---

---

## Lake Use Rules and Regulations



Full document is too large to print in the Lake Lines. Pickup a copy from the Lake Sovereign website. Direct Link....

[http://www.lakesovereign.net/pdfs/2007 Governing Docs/Lake Regs 07.05 PDF .pdf](http://www.lakesovereign.net/pdfs/2007%20Governing%20Docs/Lake%20Regs%2007.05%20PDF.pdf)

# COMMON GROUNDS REPORT

**To Be or Not to Be** We reported in the previous edition of Lake Lines wildflowers had been planted behind the dam near West Ridge Drive and we were expecting a significant crop of blooms this year.

Things do not always go as planned and currently we are on our third planting of wildflower seed this season. The saga of the wildflower planting all started when our dredging company replaced sod on the back of the dam and relocated the old sod on top of the first crop of abundantly growing wildflowers.

The dredging company removed the old sod; the field was replanted and had just germinated when the back of the dam was hydro-seeded to improve the turf area. The hydro-seed company was given instructions to avoid seeding in the area near the wildflowers, but misunderstood, saw the newly tilled area and thought what a great place to get grass to grow. Suddenly we had a great crop of Bermuda grass smothering the second planting of wildflowers.

The Bermuda grass was killed, the wildflowers replanted for a third time and currently the abundance of daily rains has made the area almost too wet for wildflowers and the new wildflower plants have been found by our resident Canadian Geese as an additional food source.

If we see any wildflowers blooming this year it will be strictly from luck, but we have enough seed in storage to replant next year and we will try again with perhaps Canada Geese as our only natural challenge.



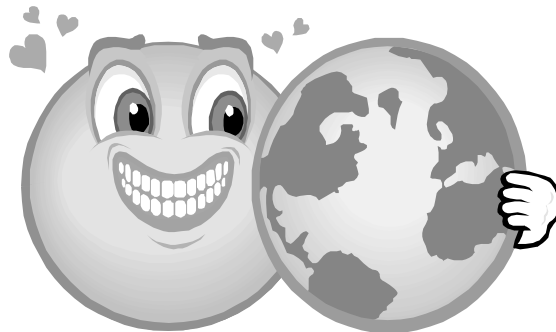
**New Clubhouse Entrance Walkway** The boardwalk entrance to the clubhouse has been replaced with non-rotting, low maintenance materials to match the recent installation of similar material on the three neighborhood docks. Thanks to David Perry for managing this effort. Each time we make a major repair or replacement to our common ground facilities, a first priority is to make it as low maintenance as possible to control future costs and allow for reserve account funding.

# COMMON GROUNDS REPORT

**Irrigation Pumps Up and Running** As reported in the last edition of Lake Lines, all common ground irrigation is now being pumped from our lake. Without the installation of pumps, the Association could not have afforded to establish the playing field on West Ridge Drive. The irrigation has been running on the top of the dam and the West Ridge Drive playing field three times daily for thirty-five minutes at each watering. This continuous irrigation effort has allowed the playing field seeding to germinate beyond first year expectations. The soil on the dam is extremely rocky and keeping that area vegetated is more challenging. The additional watering has helped sustain the limited ground cover in that area.

The playing field is still in its “tender stage” and we ask owners to stay off of the field until we can mow the field weekly and cut back on the daily watering schedule as the field becomes more established. The lake silt used to raise the playing field contains an extraordinary amount of rock and gravel, so the field is not without hazards. Our landscape maintenance company is removing rocks weekly and they almost seem to be growing in the field, as the field continues to dry and settle. Some areas of the field continue to retain an abnormal amount of moisture and the dredging company informs us this is normal and can take as much as two years to dry. Other areas of the field dry almost as quickly as irrigation is applied, but the overall results spell success in this first year effort. The choice to sod the area or seed it was dictated by the cost. Sod was estimated at \$30,000 and seeding the area was \$1,900.

We are monitoring daily weather reports and adjusting our irrigation schedule accordingly. Some owners have registered concern that the irrigation is running across the dam during their walking hours. During the early seed germination period, it was necessary to keep the area quite moist. The irrigation across the top of the dam is now set to run in the very early morning hours, so we trust no resident will be using the area at that time.



# Social Committee Report...

## Community Governmental Events held at the Clubhouse:

*Lake Sovereign Board of Directors Meeting* – Second Tuesday of each month at 6:00pm

*Sixes Road Committee Meeting* – Last Thursday of each month at 7:00pm

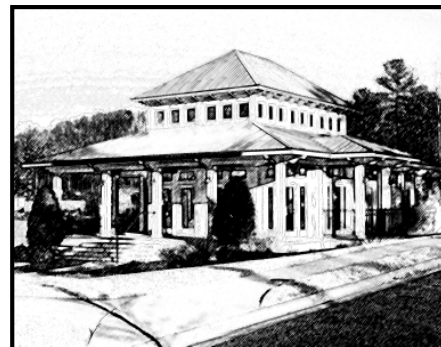
## Community Social Events held at the Clubhouse:

*Day Canasta* - First Tuesday of each month from 9:30 a.m. - 5 p.m.  
(Call Judy Derr to join)

*Ladies Evening Canasta* - Second Monday each month starting at 6:45pm  
(Call Becky Hudson to join)

*Couples Canasta* - Second Saturday evening of each month at 7:00  
(Call Becky Hudson to join)

*Day Canasta* - Third Monday of each month from 9:30 a.m. - 5 p.m.  
(Call B.J. Gearhart to join)



**Guidelines for using the Clubhouse can be found at:**

[www.lakesovereign.net](http://www.lakesovereign.net) under Governing Documents, Clubhouse Usage Guidelines

**Contact Deborah Pesta or Wendy Prichard for Clubhouse Reservations**

---

## Community Social Events at Resident's Homes



*Ladies Bunco* – First Monday each month  
*Ladies Peekno* – Second Tuesday each month

(Contact Deborah Pesta: [social@lakesovereign.net](mailto:social@lakesovereign.net) to join)



# Social Committee Report...

## Future Events to Watch For in 2008 (Dates Subject to Change)

Fall Fishing Derby, BBQ, Boat Regatta (Date TBD)

Fourth Quarterly Communications and Book Swap Event – Saturday morning in October

Halloween Party – Sunday October 26<sup>th</sup> 2:00-4:00

Annual Lighting up of Lake Sovereign – Saturday November 15<sup>th</sup>

Adult Christmas Party – December (Date TBD)

Children's Christmas Party – December (Date TBD)

Ladies Christmas Ornament Exchange – Tuesday December 16<sup>th</sup> at the Home of Ginger Evans



**Have an idea for an event or want to join the Social Committee --  
Contact Deborah Pesta at [social@lakesovereign.net](mailto:social@lakesovereign.net)**

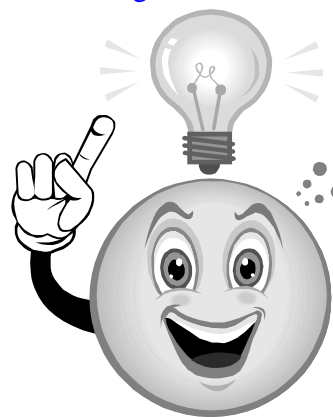
## Potential Community Social Events:

*Walking Group* – If interested, contact Deborah Pesta at [social@lakesovereign.net](mailto:social@lakesovereign.net)

*Children's Playgroup* – If interested, contact Wendy Prichard at [social@lakesovereign.net](mailto:social@lakesovereign.net)

*Youth Activities Program* – If interested, contact Melissa Perry at [social@lakesovereign.net](mailto:social@lakesovereign.net)

Plans are for this program to start up this summer/fall.  
Your ideas/suggestions/help are welcome and encouraged.



# Miscellaneous Items

## Lake Sovereign Community Phone Directory

The **Community Phone Directory** has been e-mailed to all residents who have registered for the LSHOA News Flash Bulletins. This phone directory is for the personal use and convenience of residents and should **not** be used for any business purposes. If you would like a copy of the directory, please send your e-mail address to [communications@lakesovereign.net](mailto:communications@lakesovereign.net) and request an electronic copy of the Community Phone Directory.

## LSHOA News Flash

Residents can receive important community information in a timely manner. If your Board becomes aware of an important issue relative to your health, safety, security, etc., a notice will be sent to residents in a news broadcast format. Please send your e-mail address to [communications@lakesovereign.net](mailto:communications@lakesovereign.net) to be added to our News Flash Data Base.

## “Suggestion Box” Located at the Club House

Comments and suggestions are important to your Board of Directors. A “Suggestion Box” has been added near the front door of the Club House. You can also e-mail your suggestions through our website at [www.lakesovereign.net](http://www.lakesovereign.net) and clicking on the Homeowner Association Contacts.

## Swimming Pool and Tennis Court Access

Information on accessing the tennis courts or swimming pool can be obtained by contacting Don Copeland (pool), or Larry Wagner (tennis courts) via an e-mail to [recreation@lakesovereign.net](mailto:recreation@lakesovereign.net). The complete Pool and Tennis Regulations can be found at [www.lakesovereign.net](http://www.lakesovereign.net) under Governing Documents, **Lake Sovereign 2008 Pool and Tennis Regulations**.

## Boat ID Flags

Boat ID Flags can be obtained by contacting David Perry at [lake@lakesovereign.net](mailto:lake@lakesovereign.net). The complete Lake Use Regulations can be found at [www.lakesovereign.net](http://www.lakesovereign.net) under Governing Documents, **Lake Use Regulations**.

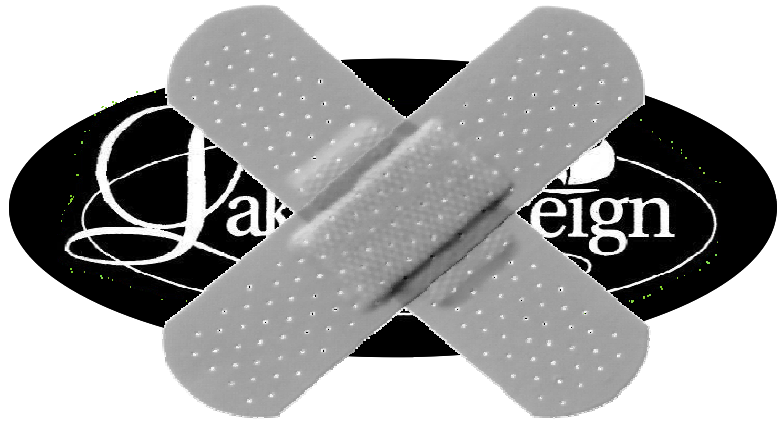
## Clubhouse Usage Guidelines

The guidelines for using the clubhouse can be found at [www.lakesovereign.net](http://www.lakesovereign.net) under Governing Documents, **Clubhouse Usage Guidelines**. Contact Deborah Pesta or Wendy Prichard for clubhouse reservations.

## EAST SHORE ENTRANCE SIGN REPAIR

You might have noticed that the Lake Sovereign entrance sign is missing.

The screws holding the sign gave way and it fell. The sign was broken. Plans are being made to repair or replace the sign.



## Advertisers Wanted

<b>Full Page</b>	<b>\$500</b>
<b>Half Page</b>	<b>\$150</b>
<b>Quarter Page</b>	<b>\$75</b>
<b>Business Card</b>	<b>\$40</b>

Lake Lines is published bi-monthly. Advertisement fee will cover six publications.

All advertising will be displayed in black and white only, with final copy to be supplied by the advertiser. All advertisers will receive a copy of Lake Lines.

Contact:

Lake Sovereign Homeowners Association, Inc.,  
 330 Lake Sovereign Court  
 Canton, GA 30114  
[communications@lakesovereign.net](mailto:communications@lakesovereign.net)

**Space Available**

**Tom English**  
 President

**Sailabratings Cruises and Tours**

Sailabratings Cruises and Tours  
 367 Ethridge Drive  
 Kennesaw, Georgia 30144  
 (678) 494-3381 / 888-252-SAIL Office  
 Email: [sailabratings@comcast.net](mailto:sailabratings@comcast.net)  
[www.sailabrate.com](http://www.sailabrate.com)



# Buying or Selling a Home?

A LOCAL MORTGAGE PROFESSIONAL CAN ADD REAL VALUE TO THE PROCESS!

Special Offers for Lake Sovereign Homeowners

- Lower Closing Cost
- Save Time and Money
- Local Appraisers
- Professional Processing

Call: Amy Derr

Tel: (770) 344-8397

Georgia Mortgage License #18684



# HOW TO SELECT

## A Professional Cleaning Company

### WHAT DISTINGUISHES A PROFESSIONAL CLEANING COMPANY FROM OTHERS?

**HERE ARE FIVE QUESTIONS TO ASK:**

**1. Do they have good REPUTATION?**

Don't trust your valuable investment to just anyone. Call our company to review our list of fine references. Fresh Start's reputation is second to none.

**2. What kind of EXPERIENCE do they have?**

Fresh Start is experienced in all carpet and fabric types. Whether it is synthetic or natural, our experience makes us one of the most respected cleaning companies.

**3. Are they well EDUCATED in their field?**

Fresh Start is certified by the IICRC (Institute of Inspection Cleaning and Restoration Certification), the world's most recognized body of certification for professional cleaners. Our staff continually studies the latest cutting edge technology. We bring this education directly to your home, giving you the most advanced cleaning ever.

**4. Do they have effective SYSTEMS?**

Being experienced in all methods of cleaning, we employ the most advanced systems on the market. All cleaning exceeds certification standards. Getting maximum soil, allergens, dust and spot removal without over wetting or leaving a sticky residue behind.

**5. What is their GUARANTEE?**

Never do business with a company that is not willing to offer a 100% MONEY BACK GUARANTEE. Fresh Start's promise to you is that if you are not completely satisfied with your cleaning experience you owe us nothing.



Carpet Cleaning Furniture Cleaning Air Duct Cleaning



Oriental Rug Cleaning Carpet & Fabric Protector



Organic Cleaning



Carpet Re-Stretching & Repair



Guaranteed Pet Odor Removal



Wood Floor Refinishing

**\$25 OFF ALL SERVICES**  
**770-575-5758**

Instant reply via email  
AtlantaFreshStart@yahoo.com



CODE: LAKE SOVEREIGN



## LAKE SOVEREIGN HOMEOWNERS ASSOCIATION, INC.

### Summer Board of Directors Meeting Dates:

July 8, Aug 12, Sept 9

The monthly meetings are available to owners to discuss individual concerns or issues. All Board Meeting owner items will be offered presentation time at 6:00 p.m. (local time) at the Club House for a period not to exceed thirty minutes. At the end of the thirty-minute period, the Board will convene their Executive Session.

Procedures for Owner agenda items:

- All owner items (with supporting documentation), for the agenda of a regularly scheduled Board meeting, are to be submitted to the Secretary of the Board ten calendar days prior to the meeting, otherwise the item will be placed on the following month's agenda.
- Owners will be allowed five minutes to present their items to the Board in a general discussion session, prior to the Executive Session.
- Individual owners will be notified of the Board decision within five business days after each monthly Board meeting.

### 2008 LSHOA Board of Directors

**President - Louis Tooker**  
**Vice President – David Perry**  
**Secretary - Melissia Perry**  
**Treasurer - Michael Flanagan**  
**Director – Phyllis Lea**  
**Director - Peter Pauline**  
**Director – Chris Lewis**

### 2008 LSHOA Committee Chairpersons

**Nomination - Melissia Perry**  
**Lake - David Perry**  
**Recreation - Donald Copeland**  
**Common Areas - John Krueger**  
**Architectural Review - Jim Derr**  
**Social - Deborah Pesta**  
**Finance - Michael Flanagan**  
**Communications - Phyllis Lea**  
**Safety and Security - Peter Pauline**

We welcome all opinions and articles that you would like shared with our community. You can e-mail us at [communications@lakesovereign.net](mailto:communications@lakesovereign.net) with any material that you would like published concerning our neighborhood.

*Phyllis Lea - Committee Chairman*

*Coleman Stone - Editor*

The printing of advertisements in this Newsletter does not constitute an endorsement by LSHOA of goods or services advertised herein. No representations are made as to the quality of the goods or services advertised or veracity of the statements relating to the goods or services.



# Thanks For Reading!

# Lake Lines